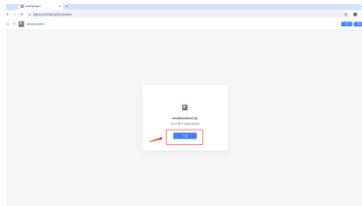


EITECH Library VPN User Guideline

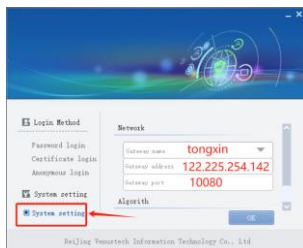
1.Windows OS

2. Go to <https://kdocs.cn/l/cg2DcXyoa6ck> and download the zip package.

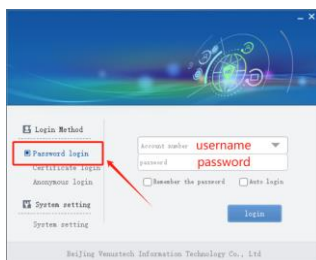


2. After installation, open the VPN tool and configure the “System setting” as below:

Gateway name: tongxin Gateway address: 122.225.254.142 Gateway port:100080



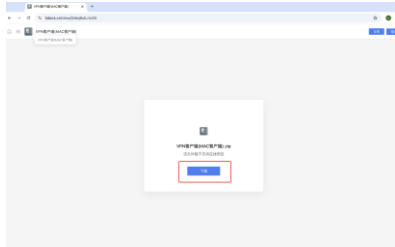
3. After step 2, click “Password login” and input your username and password. ([please send mail to it@eitech.edu.cn](mailto:it@eitech.edu.cn) get your account)



4. After login, you can visit the database through the URL listed on the website.

2. MAC OS

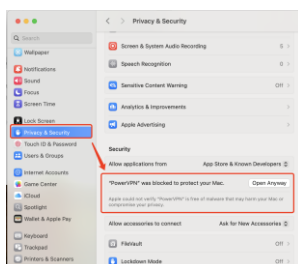
1. Go to <https://www.kdocs.cn/view/l/cbq6uLriu3A> and download the zip package.



2. Unzip the package and install the VPN tool. After installation, you can find the VPN tool in your computer named "PowerVPN".



3. After step 2, click the "PowerVPN" to open the tool. If your Mac pop up information "PowerVPN Not Opened", please go to System Settings -> Privacy & Security -> Security, and choose "Open Anyway".



4. Open terminal and run the following commands:

```
sudo rm /Library/PrivilegedHelperTools/com.leadsec.*
launchctl print-disabled system
sudo launchctl enable system/com.leadsec.charon-xpc
sudo launchctl enable system/com.leadsec.ipsec-xpc
sudo launchctl enable system/com.leadsec.sh-xpc
```

5. After step 4, you can open “PowerVPN” and see the login window. Please configure the “system setting” as below.



6. After step 5, click “Password login” and input your username and password. ([please send mail to it@eitech.edu.cn](mailto:it@eitech.edu.cn) get your account)



7. After login, you can visit the database through the URL listed on the website.